

# HabasiLINK® Straight 1/2" Pitch Belting M1220 Flat Top 0.5"

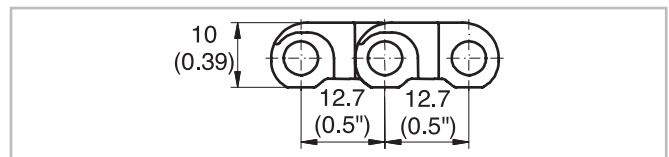
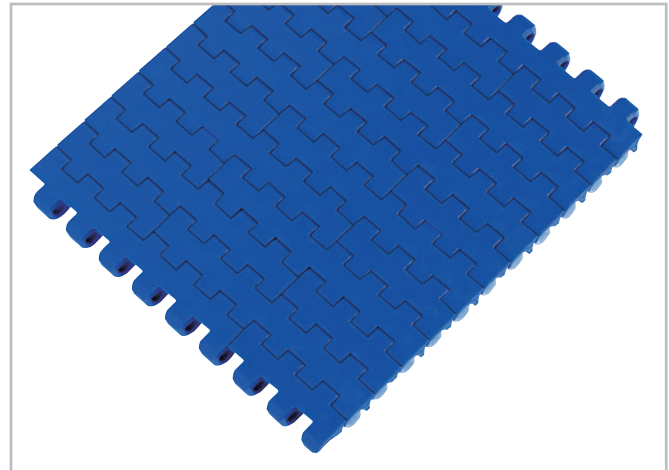


## Description

- "Nosebar transfer", recommended diameter 18 mm (0.71"); 16 mm (0.63") possible
- 0% open area
- Food approved materials available
- Easy to clean, open hinge
- Rod diameter 5 mm (0.2")
- "Open window" sprockets

## Available accessories

- Flights
- Sideguards
- GripTop modules



## Belt data

Belt material		PP	PE	POM	
Rod material		PP	PE	PP	PA
Nominal tensile strength $F'_N$ straight run	N/m	11000	6000	16000	18000
	lb/ft	754	411	1096	1233
Temperature range	°C	5 - 105	-70 - 65	5 - 93	-40 - 93
	°F	40 - 220	-94 - 150	40 - 200	-40 - 200
Belt weight $m_B$	kg/m <sup>2</sup>	5.8	6.2	8.7	8.7
	lb/sqft	1.20	1.27	1.78	1.78

Diameter of idling rollers (minimum)		Diameter of support rollers (minimum)		Diameter for gravity take-up and center drive rollers (minimum)		Backbending radius for elevators without sideguards or hold down devices (minimum)		Backbending radius for elevators with sideguards or hold down devices (minimum)	
mm	inch	mm	inch	mm	inch	mm	inch	mm	inch
18	0.7	50	2	75	3	150	6	250	10

Use the largest possible backbending radius for elevators with side guards or hold down devices.

## Standard range of belt widths $b_0$

mm (nom.)	50	100	150	200	250	300	350	400	450	500	550	600	650	700	etc.
inch (nom.)	2	4	6	8	10	12	14	16	18	20	22	24	26	28	etc.

Real belt widths are in most cases 0.1% to 0.3% smaller.

Real belt widths for PP are 0.1% to 0.3% wider.

**Standard belt widths** in increments of 50 mm (2"). Non-standard widths are offered in increments of 16.66 mm (0.66"). Smallest possible width 83.4 mm (3.25"). Non-bricklaid belts 50 mm (2") and 100 mm (4") wide.

**For detailed material properties** refer to the HabasiLINK® Engineering Guidelines or contact your Habasi representative.

**The nominal tensile strength** is valid for 23 °C (73 °F). The admissible tensile force depends on the operating temperature near the drive sprockets. Within the temperature range allowed, the admissible tensile force may vary from 100% to 20% of the nominal tensile strength. For detailed information and correct calculation of effective tensile force refer to the Calculation Guide in the HabasiLINK® Engineering Guidelines.

# HabasitLINK® Straight 1/2" Pitch Belting M1220 Flat Top 0.5"



## **Product liability, application considerations**

If the proper selection and application of Habasit products are not recommended by an authorized Habasit sales specialist, the selection and application of Habasit products, including the related area of product safety, are the responsibility of the customer.

All indications / information are recommendations and believed to be reliable, but no representations, guarantees, or warranties of any kind are made as to their accuracy or suitability for particular applications. The data provided herein are based on laboratory work with small-scale test equipment, running at standard conditions, and do not necessarily match product performance in industrial use. New knowledge and experiences can lead to modifications and changes within a short time without prior notice.

BECAUSE CONDITIONS OF USE ARE OUTSIDE OF HABASIT'S AND ITS AFFILIATED COMPANIES CONTROL, WE CANNOT ASSUME ANY LIABILITY CONCERNING THE SUITABILITY AND PROCESS ABILITY OF THE PRODUCTS MENTIONED HEREIN. THIS ALSO APPLIES TO PROCESS RESULTS / OUTPUT / MANUFACTURING GOODS AS WELL AS TO POSSIBLE DEFECTS, DAMAGES, CONSEQUENTIAL DAMAGES, AND FURTHER-REACHING CONSEQUENCES.